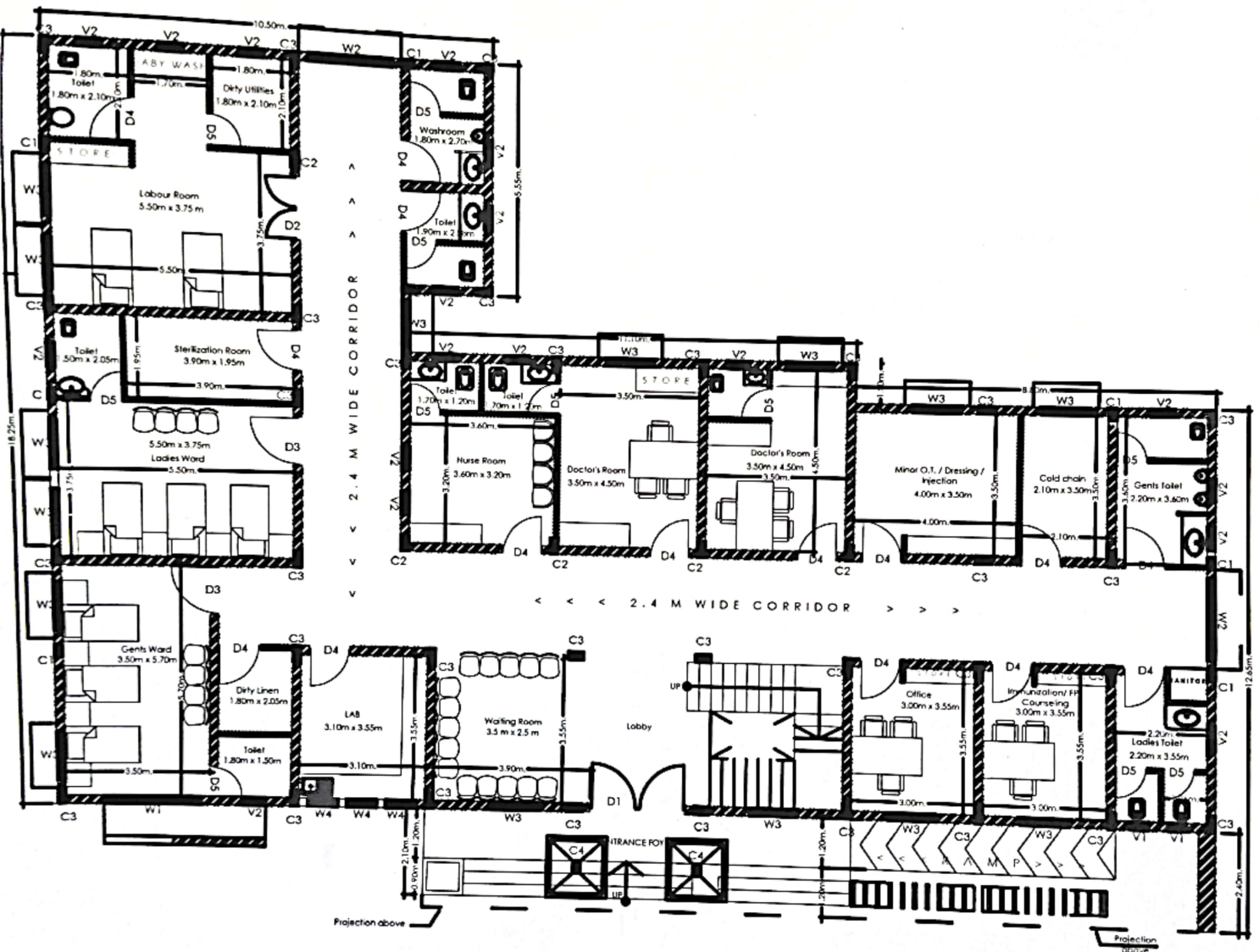


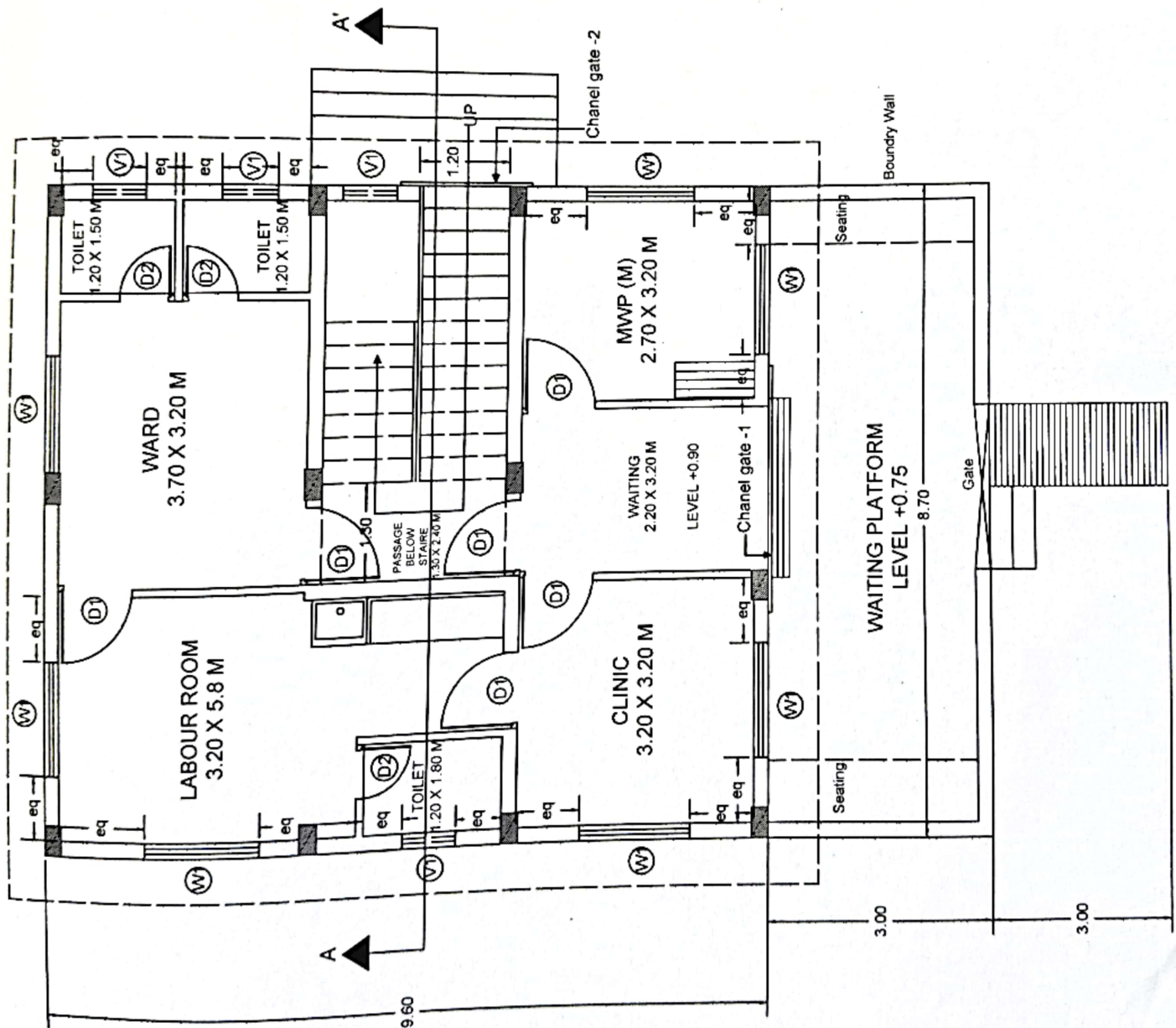
F.F FLOOR

Executive Engineer
Rural Engineering Service Da.
Sukma, Dt. Sukma (C.G.)



G.FLOOR

Executive Engineer
Rural Engineering Services Da.
Sukma, Dt. Sukma (C.G.)



NOTES

1. ALL DIMENSIONS ARE IN METER, LEVELS & COORDINATION ARE IN M
2. CONCRETE GRADE SHALL BE OF M20
3. REINFORCEMENT SHALL BE OF HSD BARS GRADE F415/CONFIRMING TO IS1786.
4. NOT MORE THAN HALF THE COLUMN BARS SHALL BE LAPPED AT A SECTION
5. CLEAR COVER TO REINFORCEMENT SHALL BE
 - a. FOUNDATION 90mm
 - b. BEAMS 25mm
 - c. COLUMN 40mm
 - d. SLAB 15mm

CONCRETE GRADE - M20

CONCRETE OF ANTI-CRETE PROPERTIES

CONC. (M20)

C.G.M.S.C.

CHHATTISGARH MEDICAL SERVICES CORPORATION LIMITED

PROJECT TITLE

SUB HEALTH CENTER

Ground Floor Plan (Architecture Draw.)

DEALT BY -

CHECKED BY -

DRAWING NO. -

DATE

SHEET

05

GROUND FLOOR PLAN

[Note - Subject To Change.]